

Digital Cabinets Roll-Through Compact Refrigerator 750 lt - 1 Full, 1 Glass door

ITEM # _____

MODEL # _____

NAME # _____

SIS # _____

AIA # _____


725098 (RI075R2FGT)

1-full and 1-glass door Roll-through Refrigerator, 750lt, +2+10°C, AISI 304, R290

Short Form Specification

Item No. _____

External and internal in AISI 304 stainless steel. Insulation thickness mm60. One right hinged full door and one glass door with lock and internal light. Built-in refrigeration unit; ventilated operating mode; digital control; evaporator; automatic defrost; external digital temperature display; high/low humidity switch; internal lighting. Operating temperature +2+10°C. For ambient temperatures up to 43 °C. CFC and HCFC free. R290 gas in refrigeration circuit.

Main Features

- Ventilated cooling for optimal temperature distribution.
- Lift-up control panel to better access main components.
- Interior light and lockable door.
- Digital control panel with temperature display.
- Connectivity ready for real time access to connected appliances from remote and data monitoring (requires optional accessory).
- Large digital white-digit display with humidity selection button (3 preset level), internal temperature display and setting, manual activation of defrost cycle and turbo frost cycle (to rapidly cool warm loads).
- The operating temperature can be adjusted from +2 to +10°C to suit both meat and dairy storage requirements.
- Automatic defrost and automatic evaporation of defrost water.
- One full door and one glass door.
- Suitable for all kinds of 18 shelves GN 1/1 trolleys, designed to fit the 18 shelves GN 2/1 trolley available as optional accessory.
- Complies with main international certification bodies and is CE marked.
- Inner side protectors to protect the internal walls.
- Right hinged glass door.
- Adjustable bottom door gasket.
- Simple cooling unit easily accessible from the rear of the appliance.
- Tropicalized unit.

APPROVAL: _____

Construction

- Evaporator and fan are placed outside the cell to provide the maximum storage capacity.
- Lockable door.
- Evaporator cover is easily removable for service.
- Developed and produced in ISO 9001 and ISO 14001 certified factory.
- Built-in compressor to suit operating conditions.
- Electrical connection: 220-240V-single phase 50HZ or 220-240V-single phase 60HZ.
- Interior cell and external panel are constructed in 304 AISI stainless steel.
- External panels are in AISI 304 stainless steel for higher level of hygiene.

Sustainability

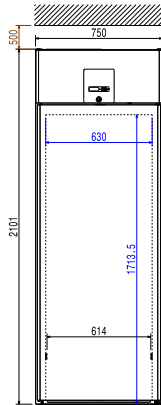


- CFC and HCFC free, highly ecological refrigerant type: R290 (ecological gas in foam: cyclopentane). Hydrocarbon refrigerant gas R290 for the lowest environmental impact (GWP=3), to reduce green house and ozone depletion effects.
- Finished in top quality materials to ensure durability.
- CFC and HCFC-free insulation.
- Cabinet fitted with up to 60 mm thickness of Cyclopentane insulation for best insulating performance (thermal conductivity: 0,020 W/m*K). CFC and HCFC-free insulation.

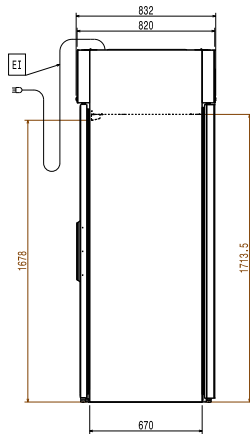
Optional Accessories

- Insulated floor-ramp for 750lt Roll-in PNC 881279
Pass-through Refrigerator
- Trolley 18x2/1GN for roll-in 750lt PNC 881521

Front

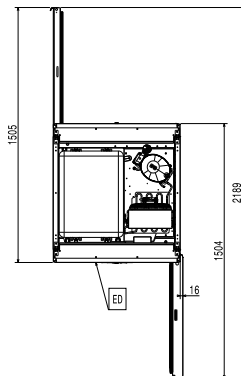


Side



EI = Electrical inlet (power)

Top



Electric

Supply voltage:

725098 (R1075R2FGT) 220-240 V/1 ph/50 Hz

Predisposed for:

220-230 V 60 Hz

Key Information:

Door hinges:	Right Side
External dimensions, Width:	750 mm
External dimensions, Depth:	832 mm
External dimensions, Height:	2101 mm
Number and type of doors:	2 Full; Glass
External side panels:	304 AISI
External top panels:	304 AISI
External door material:	Glass
Internal panels material:	304 AISI

Refrigeration Data

Compressor power:	1/3 hp
Operating temperature min.:	2 °C
Operating temperature max.:	10 °C

ISO Certificates

ISO Standards:	ISO 9001; ISO 14001; ISO 45001; ISO 50001
----------------	---

Sustainability

Refrigerant type:	R290
Refrigeration power:	520 W
Refrigerant weight:	150 g